

2515/2518/2518d

> DIGITAL IMAGING SYSTEMS

Gain **control**
of **your**
documents



Savin 2515/2518/2518d



FEATURES

- > 600 dpi resolution
- > network printing with optional Print Controller and Ethernet
- > 33.6 Kbps Fax option
- > advanced digital features
- > auto duplexing (2518d)
- > dual component design reduces cost per page
- > SmartNetMonitor software provides real-time information
- > compact design saves space

savin®

Desktop Convenience, Workgroup

The Solution Is Right Here.

Designed to meet the unique requirements of the small office or workgroup environment, the Savin 2515, 2518 and 2518d provide all the advantages of digital technology – including network connectivity and crisp 600 dpi laser output – in a sleek design that's right at home in a variety of offices. Whether you're looking for a compact desktop system or a more robust small workgroup powerhouse, we've got you covered:

- **Savin 2515** – 15 PPM with a maximum paper capacity of 1,350 sheets and optional 30-sheet Automatic Document Feeder.
- **Savin 2518** – 18 PPM with a maximum paper capacity of 1,600 sheets and optional 30-sheet Automatic Document Feeder.
- **Savin 2518d** – 18 PPM with standard Duplexing, optional 50-sheet Reversing Automatic Document Feeder and a maximum paper capacity of 1,600 sheets.

Upgrade to Business Class

The 2515/2518/2518d easily meet a variety of document management needs. Start with state-of-the-art digital copying and from there add optional printer and fax functions. Or, just jump right in and start with a fully configured system; it's your choice. Either way, you'll benefit from an economical document management solution that reduces energy consumption and consumable inventory and saves valuable office space.

Exemplary Printing Performance

Add the optional Print Controller and Ethernet Interface and you've got an exceptionally affordable and productive network printer. As a shared LAN resource, the 2515/2518/2518d integrate seamlessly into today's most prevalent network environments. A fast processor and Send Once, RIP Once – available through optional RAM – combine for optimum document throughput. Standard PCL and optional PostScript 2 emulation ensure compatibility with general business and graphics applications.

Super Fast Fax Communication

The 2515/2518/2518d Fax Option rivals the capabilities of even the most advanced, high-end fax systems. Your documents speedily arrive at their destinations in as little as three seconds. And, features such as Dual Access and Batch Transmission significantly boost fax productivity.

SmartNetMonitor Management Utility

Easily manage print jobs with SmartNetMonitor. Comprehensive software provides real-time information – system configuration, system status and paper supplies – to users and network administrators, which enables users to manage their own tasks while reducing network administrator intervention.



The 2515 with Platen Cover.

Progressive Digital Technology

Scan Once, Print Many – It's no longer necessary to wait until copying is complete before you can retrieve your originals. Plus, you'll reduce handling of delicate originals. For maximum productivity, add the optional Automatic Document Feeder and eliminate the need to manually place originals on the platen glass.

Automatic Image Rotation – Save money when you eliminate the waste that occurs when the orientation of hardcopy originals, print jobs or fax receptions don't match the paper you have loaded.

Electronic Sorting – The 2515/2518/2518d sort document sets without any extra hardware. Plus, you can rotate sorted sets at alternating 90° angles. (2515 requires optional Paper Bank).

Combine Originals – Easily manage documents that you have to keep around – but seldom refer to – by putting up to four originals onto a single page.

up Performance...



The 2518d with Automatic Duplex Unit, 50-Sheet ARDF, PS450 Paper Bank and Console.

Automatic Duplexing (2518d)

Choose the 2518d and gain productive – and cost effective – duplexing capabilities.

- Do something positive for the environment and save money by cutting paper usage in half.
- Reduce the need for expensive hardcopy filing space.
- Reduce postage costs.
- Automatically fax two-sided originals and eliminate the need to create single-sided copies (requires Fax Option and Automatic Reversing Document Feeder).
- Generate duplexed originals from the desktop with a single click of your mouse (requires Print Option).

Smooth Paper Handling – Exceptionally large and versatile paper supply ensures uninterrupted copy, print and fax output.

Plus, the standard Bypass allows you to process jobs with special media requirements – such as envelopes or transparencies – without resorting to time-consuming paper switching tasks.

Minimal Maintenance – A dual component consumable design minimizes routine maintenance, enhances image quality and dramatically lowers cost-per-page for big savings over the long haul.

Gain the Digital Edge

If you're in charge of a small office or workgroup, don't wait another minute; find out today what digital technology can do for your future.

For more information about the Savin 2515/2518/2518d, contact your authorized Savin sales location.

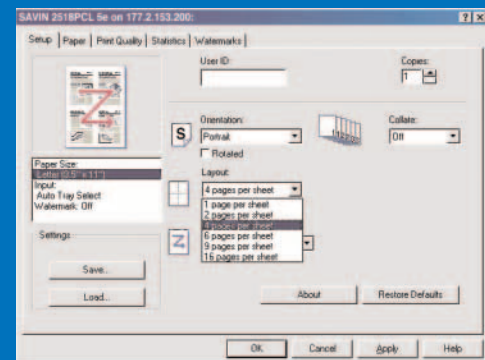
www.savin.com



Need a special paper size for a special job? Just load it into the 100-Sheet Bypass and you're ready to go.



Toner replacement is a hassle-free process thanks to the 2515/2518/2518d's Dual Component design.



User-friendly drivers help you easily navigate through your set-up and output choices.

savin
2515/2518/2518d

Savin 2515/2518/2518d



- > 600 dpi resolution
- > network printing option
- > auto duplexing (2518d)
- > compact, space-saving design

COPIER & GENERAL SPECIFICATIONS

Configuration	Digital copier
Copying Process	Dry electrostatic transfer
Recording Method	Laser
Toner	Dual Component
Copier Memory	16 MB expandable to 48 MB
Resolution	600 dpi
Gray Scale	64 levels
Continuous Copy Speed	18 cpm - letter size (2518, 2518d) 15 cpm - letter size (2515)
Multiple Copy	Up to 99
Warm-Up Time	20 seconds
First Copy Time	6.9 seconds
Original Size	Up to 11" x 17"
Output Document Size	5.5" x 8.5" - 11" x 17"
Standard Paper Supply	2 x 250 sheet drawers, 100 sheet bypass (2518, 2518d) 1 x 250 sheet drawer, 100 sheet bypass (2515)
Maximum Paper Capacity	1,600 sheets (2518, 2518d) 1,350 sheets (2515)
Paper Output Capacity	250 sheets internal tray
Paper Weight	Drawers 16 - 24 lb. Bypass 14 - 42 lb. Duplex 20 - 24 lb. (2518d)
Zoom Range	50% - 200% in 1% increments
Reduction Ratios	93%, 78%, 65%, 50%
Enlargement Ratios	121%, 129%, 155%
Dimensions	23.1"W x 22.4"D x 20.4"H (2518d) 21.7"W x 22.4"D x 20.4"H (2518) 21.7"W x 22.4"D x 16.5"H (2515)
Power Source	120V/60Hz 15A
Weight	99 lbs. (2518d) 93 lbs. (2518) 77 lbs. (2515)
Other Features	Auto Image Density, Auto Off, Auto Start, Auto Reduce/Enlarge, Image Rotation, Photo Mode, Series Copying, Electronic Sort, Combine Originals 2/4, User Codes (50), Scan Once/Print Many, Auto Tray Switch*, Rotate Sort*, Duplexing (2518d)

*2515 requires optional Paper Bank

PRINTER MODULE OPTION

Print Speed	18 ppm (2518, 2518d), 15 ppm (2515)
CPU	75 MHz
Memory Capacity	16 MB standard, expandable to 144 MB
Printer Languages	PCL6/5e (standard) PS2 emulation (option)
Interface	Parallel IEEE1284, NIB (option)
Driver	Windows 95/98/NT 4.0/2000/Me/XP Macintosh 8.x/9.x
Fonts	35 Intellifonts, 10 TrueType, 80 PostScript (option)
Resolution	600 dpi
Topologies	Ethernet (10/100BaseT)
Network Protocols	TCP/IP, IPX/SPX, AppleTalk (Auto Switching)
Network Operating Systems	Novell NetWare 3.x, 4.x, 5.x and Systems Intranetware; Microsoft Windows 95/98/NT 4.0/2000/Me/XP; Mac OS 8.x/9.x
Other Features	Collation, Slip Sheet, Edge Smoothing, Watermarks, Envelope Printing, Tray Locking

FAX MODULE OPTION

Compatibility	Group 3, ITU.T
Modem Speed	33.6 Kbps with automatic shift-down
Transmission Speed	3 seconds
Scanning Speed	1.2 seconds (200 x 200 dpi)
Compression Method	MH, MR, MMR
Resolution	200 x 400 dpi
Standard Page Memory	4 MB (160 pages*)
Transmission/Reception	Up to 11" x 17"
Auto Dial	32 quick, 100 speed, 9 groups
Other Features	Auto Reduction, Send Later, Direct Fax Number Entry, Label Insertion, Restricted Access, Telephone Directory, Dual Access, Batch Transmission, Forwarding, One Hour Memory Backup
	*ITU-T No. 1 Chart

OTHER OPTIONS

DF71 Auto Reversing Document Feeder - 50 Sheets (2518d)
DF72 Auto Document Feeder - 30 Sheets (2515/2518)
Consoles
Copier Memory 32 MB
Network Interface Board Type 1018
32 MB, 64 MB, 128 MB DIMM Printer Memory
PS460 Paper Bank (500 x 1)
PS450 Paper Bank (500 x 2)
PostScript 2 Emulation Type 1018
Platen Cover Type 1018
Handset Type 1018

savin



Savin Corporation Stamford, Connecticut 06904 ©2001 Savin Corporation. SAVIN® is a registered trademark of Savin Corporation. All other trademarks are the property of their respective owners. Product specifications subject to change without notice. Printed in U.S.A. (S1607) 50M 11/01

For more information
contact your authorized
Savin sales location.

www.savin.com

